

information for FAMILIES



OUR FAMILY SUPPORT WORKER

Name:

Phone Number:

WHAT WE DO

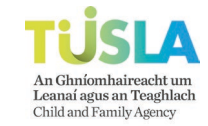
- » Home, family & personal hygiene
- » Advice, information & referrals to services
- » Triple P - evidence based parenting support programme
- » Advice on budgeting & family finance
- » Supporting the educational and health needs of the family
- » Improving and maintaining standards in home management
- » Ensuring attendance at important appointments
- » Supporting families in the Meitheal process
- » Supporting re-unification plans for families with children in care
- » Helping families to achieve their goals

CONTACT US

Unit 7, Block 5,
Port Tunnel Business Park
Clonsaugh, Dublin 17

Tel: 01 5161146 Fax: 01 5167461

Web: www.asterfamilysupport.ie
Email: info@asterfamilysupport.ie



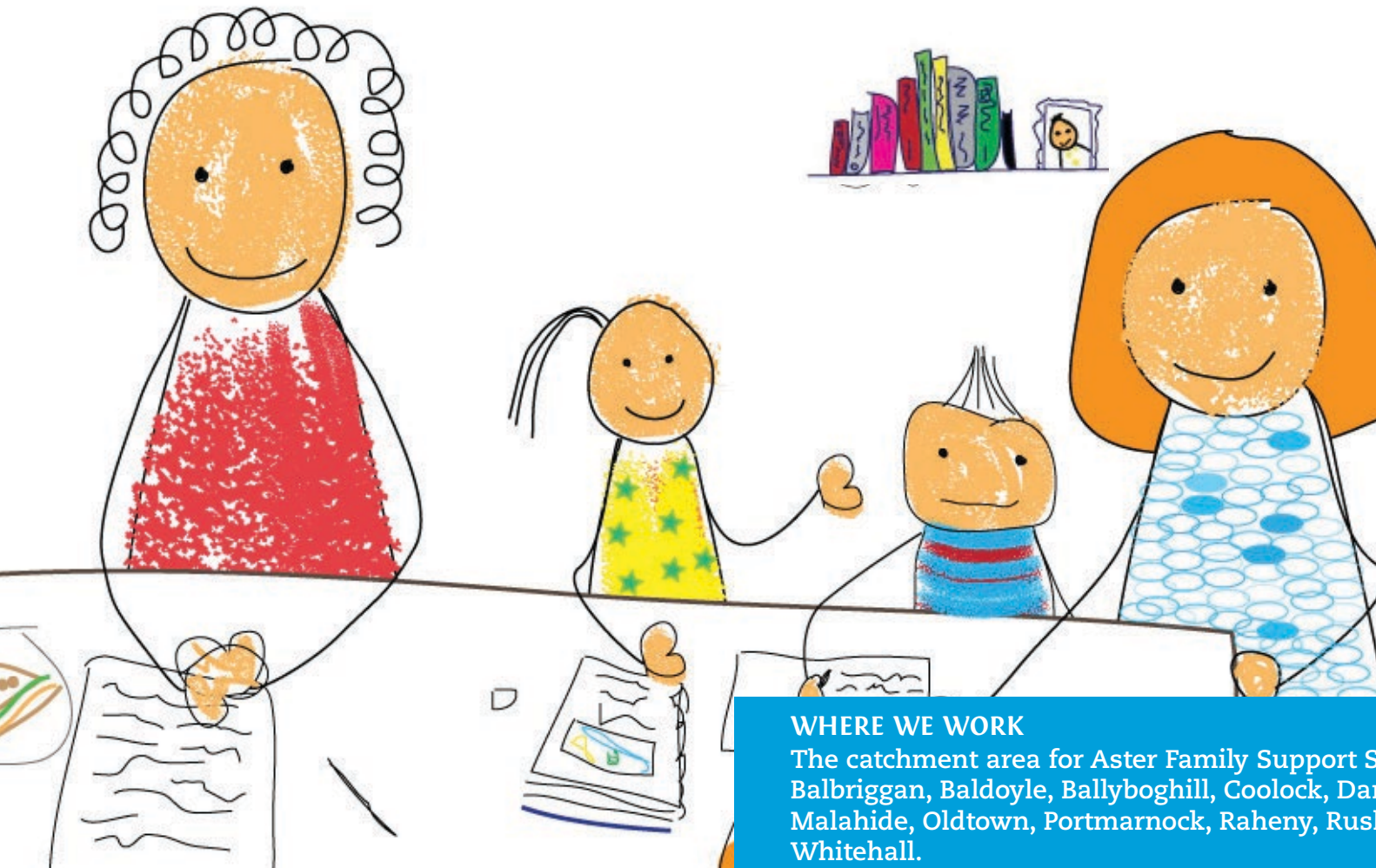
ABOUT ASTER FAMILY SUPPORT

Aster Family Support works to increase a family's capacity for self-sufficiency by building on strengths, enhancing life skills and strengthening community linkages. Supports are generally provided to families in their own homes and communities. The primary focus is on early intervention aiming to promote and protect the health, wellbeing and rights of all children, young people and their families, paying particular attention to those who are vulnerable or at risk.

PRINCIPLES OF FAMILY SUPPORT

Family Support is both a style of work and a set of activities which reinforce positive informal social networks through integrated programmes. The principles of Family Support are:

- » To intervene early when difficulties arise in order to prevent problems escalating
- » To work in partnership with families, professionals and communities
- » To ensure interventions are needs led and strive for minimum intervention.
- » To empower families to master the challenges in their lives and strengthen informal support networks
- » To recognise that all families have strengths which are unique and depend upon culture, beliefs and socioeconomic status



WHERE WE WORK

The catchment area for Aster Family Support Services includes the communities of Artane, Balbriggan, Baldoyle, Ballyboghil, Coolock, Darndale, Donnycarney, Garristown, Howth, Lusk, Malahide, Oldtown, Portmarnock, Raheny, Rush, Santry, Skerries, Swords and The Naul and Whitehall.

Concerns relating to child protection must be made directly to the Tusla Child and Family Agency Duty Social Worker Ph: 870 8000 (Swords); 816 4200 (Coolock) and 646 4518 (Dublin 15).